

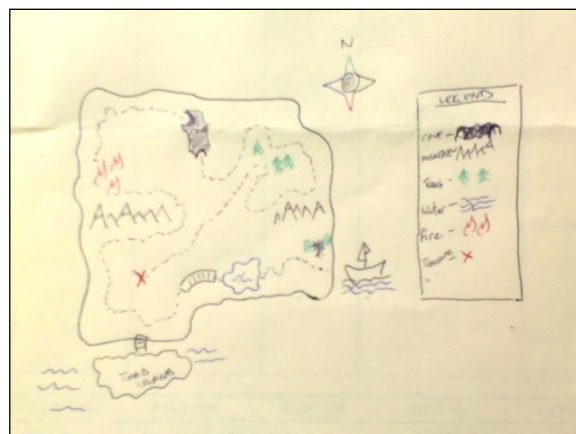
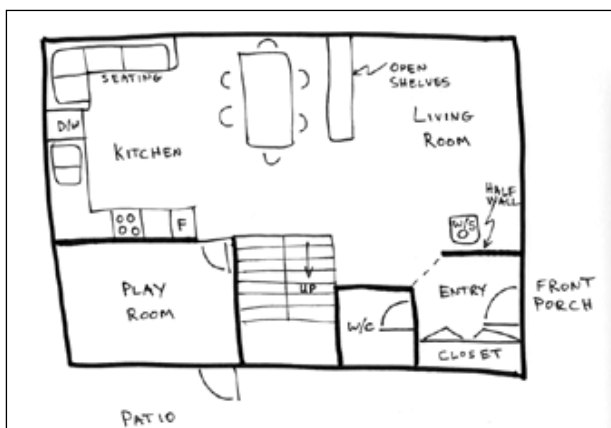
## Treasure Island

Have you been cooped up long enough? How about we put on our explorer hats or pirate hats or artist hats? Maybe you want to wear all three which is fine by me!!! Did you know: A **cartographer** is the person who creates maps, whether they're of the world, the local bus routes, or buried pirate treasure.

### Part 1 -Cartography (Mapping the island)

- Get out a couple sheets of paper and some pencils/pens/crayons.
- Let's do a rough draft drawing first. How do you know what to draw and where? Well, I am about to share a secret with you. All mappers are magicians. This map will be inspired by your home. Each room is part of the island and you can create them to be anything your imagination can manifest. Is your bathroom the watery cave where dragons live? Or maybe your kitchen is a mountain with a volcano? Or your bedroom could be the Swallowing Swamps? Is the water around your island filled with traitorous rocks or sharks or maybe there is a mote full of crocodiles. Use the Be creative. If your home has multiple floors, draw each floor as its own island. Name your Island(s) by using letters from your full name. What's your Island called?
- Be sure to include:
  - A directional arrow. North is almost always up. Is it the same in your world or different?
  - A Legend. This lets any other travellers know the marks and symbols on your island.
  - Starting point. This is where you enter your island-home.
  - A path or trail through your island. Can your stairs be a bridge or a mountain you have to climb? Maybe there are some renovations happening in your home right now; could they be part of a risky patch along the path? Be creative.
  - X marks the secret treasure. What is your secret treasure? Where is it hiding? Is there more than one place for secret treasure? I know there are sweet smelling bath bombs in my bathroom or yummy chocolate in my fridge or my favourite onesie in my bottom dresser drawer. What are treasures for you?

Here is a quick example. I know your map will be amazing!



### Part 2 -Time to Explore

Now it's time to explore. Go on the journey you mapped out. If anyone else in the household made a map too, how about exchanging maps and explore each other's map. What new wonders did you notice or find?